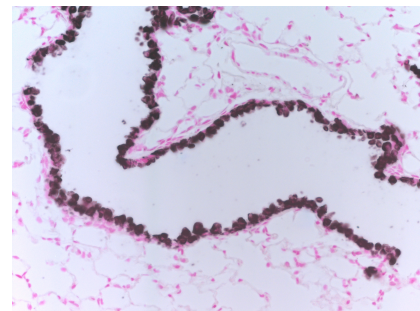


**Rabbit Anti-CCSP
Polyclonal Antibody**

Catalog Number: WRAB-3950
Quantity: 100 µl
Specificity: Mouse, rat
Immunogen: rat CCSP peptide (KLH conjugated)
Isotype: NA



Immunohistochemical Stain.

This picture shows adult mouse lung tissue embedded in paraffin and stained with anti-CCSP rabbit serum (1:20,000 dilution). CCSP was visualized by DAB (black color) and counterstained with Nuclear Fast Red (pink color). Magnification 20x.

Applications and Suggested Dilutions*

Immunohistochemistry – 1:20,000

Western Blot of tissue – 1:10,000

*Specific dilutions and blocking conditions should be determined by the investigator.

QC Testing

Immunohistochemical staining.

Supplied As

Rabbit serum containing 0.01% sodium azide to preserve.

Storage

Aliquot and store at -20°C. Multiple freeze/thaw cycles not recommended.

Reference

Harrod, KS, et al., *Am J Physiol (Lung Cell Mol Physiol)* (1998) 275:L924-L930.

Stripp, BR, et al., *Am J Physiol (Lung Cell Mol Physiol)* (1996) 271:L656-L664.