

TERRACE BIOTECH

www.TerraceBiotech.com

Anti RT2-70: TB-44ART2-70 1 ml

Specificity: Rat Lung Alveolar Type 2 Cells; the antibody binds to a partially characterized 70 kDa integral membrane protein found specifically on the apical surface of rat type 2 cells. This antibody does not cross react with mouse or human lung tissue. It does cross react with sheep type 2 cells.

Validated for: IHC, Western Blots (under non reducing conditions), FACS, magnetic cell sorting, and dot blots.

Production Host: Mouse hybridoma cells

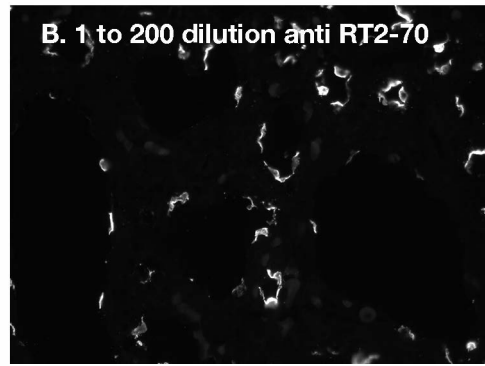
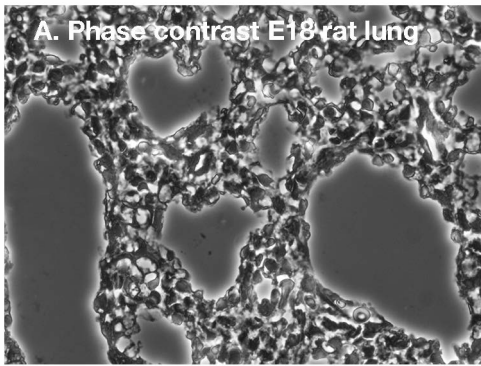
Antibody Isotype: Mouse IgG3, concentrated hybridoma supernatant 0.2µm filtered.

Storage and Use: Upon receiving the antibody, divide it into separate aliquots and store them at -20°C (or colder). This antibody is stable for 2 years when stored at -20°C (or colder). Do not store the antibody in a frost-free freezer. To use the antibody, thaw it rapidly at 30°C, and place it on ice until you're ready to use it. A 1:150 dilution in a suitable buffer provides a 'robust signal' after two freeze thaw cycles of the stock solution when used for IHC. This product is non-hazardous.

Research Use: This antibody supernatant is intended for research use only.

Product Literature:

1. Robert F Gonzalez · Leland G Dobbs, Isolation and Culture of Alveolar Epithelial Type I and Type II Cells from Rat Lungs Chapter 10, pgs 145-160, Methods in molecular biology (Clifton, N.J.), January 2013
2. Gonzalez, R., Yang Y. H., Griffin C., Allen L., Tigue Z. and L.G. Dobbs. (2005) Freshly Isolated Rat Alveolar Type I, Type II and Cultured Type II Cells Have Distinct Molecular Phenotypes. Am J Physiol Lung Cell Mol Physiol 288: L179-L189
3. Gonzalez RF, Allen L, Dobbs LG. (2009) Rat alveolar type I cells proliferate, express OCT- 4, and exhibit phenotypic plasticity in vitro. Am J Physiol Lung Cell Mol Physiol.;297(6):L1045- 55.



IHC testing of anti RT2-70

Anti RT2-70 was diluted 1:200 and incubated on a 2 μ m thick section of prenatal rat lung (day e18) for 30 min. at 27°C . Bound primary antibody was visualized using affinity purified isotype specific secondary antibody labeled with Alexa 488 (B. above).

Antibody Concentration: 401 μ gs of mouse IgG3/ml supernatant. Anti RT2-70 mouse IgG3 in the supernatant was determined using a Mouse IgG3 Elisa Kit (No. 6360, Alpha Diagnostics). Supernatant serial dilutions were tested in duplicate, negative controls were negative and positive controls positive.

Batch expiration date: June 25, 2023 Lot: N44C

Note: Antibody is shipped filter sterilized in non-hazardous RPMI media containing saline, 5mM sodium phosphate, 24mM sodium bicarbonate, and 25mM HEPES.